

2020 Rotax Technical Update – USA

J3 Competition Inc.

2154 Norcross Road
Erie, PA 16510 (USA)

December 18, 2019

RE: Rotax MY20 Updates

With the onset of our sport taking place predominately with younger drivers (Micro/Mini categories) its critical for the sport of karting to have a sustainable platform that creates parity alongside important cost controls and ease of ownership. The sport of karting to many who have not grown up in the industry can be a very complicated sport with a long workaround to get information. BRP-Rotax the world leader in two-cycle technology has recognized this since the mid-90's and thus invented the 'Touch and Go' concept for karting which has in itself taken the sport to the next level. For 2020, the Rotax brand has made a few final alterations to its Rotax Micro and Rotax Mini concepts to lower cost implications while increasing parity and the ease of ownership – Welcome the MY20 Micro and Mini Max engine package!

“The resources and efforts put forward from the staff at BRP-Rotax has been unbelievable in order to create this new offering to the market. Built upon the existing platform, the Micro and Mini platforms are easily updated to the new package and done so at a fractional cost and the parity as seen at the 2020 Grand Finals is really unmatched.” – *J3 Competition*

What were the objectives:

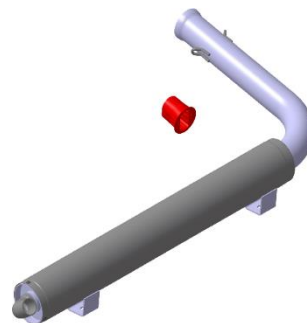
- Simplify the ownership model
- Enhance Parity
- Create a package that installs on a 950mm (Cadet) wheelbase chassis with ease
- Long Life
- Ease of daily use plus a low cost to move form Micro – Mini

With all the objectives more than successfully achieved, here is how it happens. Additionally, we've outlined the differences between Micro and Mini alongside explaining the different available update product kit options.

MINI MAX MY 20

Inlet restrictor (2)

- Improved throttle response
- Improved ease of carburation for the novice and expert alike (put the jet in and drive)
- Improved power curve for ease of use (wider stable power band)
- Clamp on carburetor cover not needed.



2020 Rotax Technical Update – USA

Exhaust system (1)

- Reduced performance (class was too fast for many Organizations) - 0,6 to 1,0seconds per lap
- Parity improved, loop holes for manipulation eliminated, exhausts are no longer needed to be sealed

Product features

- Lap time slower by 0,6 – 1,0 seconds (claims of ASN's, Micro MAX is too fast)

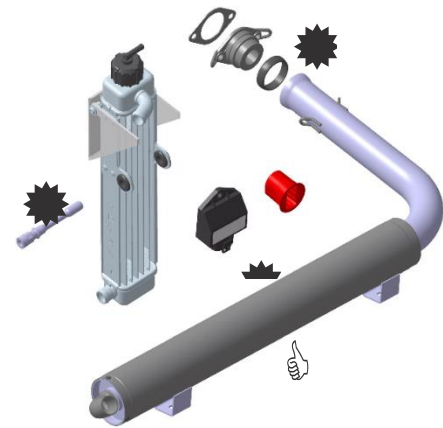
MINI MAX MY20

Inlet restrictor (5)

- Same as Micro MAX MY20, same features

Exhaust system (1)

- Wider power band
- Micro MAX MY20 external with Mini MAX MY20 specific perforated tube and isolating mat
- Fits perfectly the 950 mm chassis



Exhaust socket (3)

- Exhaust socket with 22 mm diameter

ECU Mini MAX MY20 (6)

- Wide power band which will provide exciting racing and easy set up

Radiator and radiator support (7 and 8)

Same as Micro MAX, perfect fit for the 950 mm chassis

Product features

- Combination of exhaust, ECU, inlet restrictor and squish provide a great racing characteristic with a wide and easy to use power band.
- Gearing easy to select (due to the wide power band).
- Similar lap times as actual Mini MAX
- Lighter package (small radiator and exhaust in combination with the 950 mm chassis) = more fun to drive and safer for the kids!

So, what's the difference between Micro MY20 and Mini MY20?

Description	125 Micro MAX MY20	125 Mini MAX MY20
Squish	2,4	1,2
Exhaust socket	18 mm (273192)	22 mm (273196)
Exhaust system	273136	273137
(Perforated tube)	273212	273211
(Isolating mat)	273982 (Jun. Sen. DD2)	273985 (Mini)
ECU	666815 (Senior)	666818 (Mini)

Exhaust systems MY20

- Micro and Mini exhaust systems are identical except the perforated tube and isolating mat.
- Diameter of MY20 exhaust system are calibrated on both ends (1) of the silencer.
- The cover of the perforated tube of Mini MAX is marked with an “X” to identify Micro and Mini.

Q&A

Q: Is it allowed to use MY19 Micro exhaust with MY20 perforated tubes (Micro and Mini)? A: No, not RMC conform

Q: Is it allowed to use MY20 exhaust with MY19 Micro perforated tube (Rotax 273098)? A: No, not RMC conform

Perforated tube Micro MY20, Rotax 273212

- Diameter (1) is calibrated and first part of the tube is not perforated.
- Isolating mat for Micro MAX, Rotax 297982 (same as all other MAX engines), dimension 480 x 270 mm.

Perforated tube Mini MY20, Rotax 273211

- Cover marked with “X”, welded on steel mesh to cover the perforated area.
- Isolating mat for Mini MAX, Rotax 297985 (specific for Mini MAX), dimension 490 x 180 mm.

2020 Rotax Technical Update – USA

Available Update Kits

- **PN# RTX.MY20Micro-Mini** [Moving from a MY20 Micro Max > MY20 Mini Max]
 - Perforated Tube
 - Exhaust Socket w/ Gaskets
 - ECU
 - Isolating Mat + Hardware
- **PN# RTX.MY19-20 Micro-Micro** [Moving from a Micro Max > MY20 Micro Max]
 - Exhaust System
 - Inlet Restrictor
- **PN# RTX.MY19-20 Mini-Mini** [Moving from a Mini Max > MY20 Mini Max]
 - Exhaust System
 - Exhaust Socket w/ Gaskets
 - ECU
 - Radiator + Mounting
 - Inlet Restrictor

Thank you

J3 Competition Inc.